

BiopC[®]

Interventional

Product Catalogue



MöllerMedical

Where **Medicine**
meets **Engineering**

■ About us

Möller Medical's product line BiopC® is based upon decades of experience in developing and manufacturing all kinds of cannulae and needles for human medicine as well as special products in the field of intensive care.

Creating high quality products with utmost respect for the patient's well-being has been our core concept ever since the foundation of the company more than 60 years ago. This principle guided the development of the BiopC® product range and will remain a determining factor in further development of the product portfolio.

Möller's BiopC® products cover a broad range of applications. Our highly qualified team will assist you regarding our current products and will keep you informed about upcoming developments.

Möller Medical, Fulda



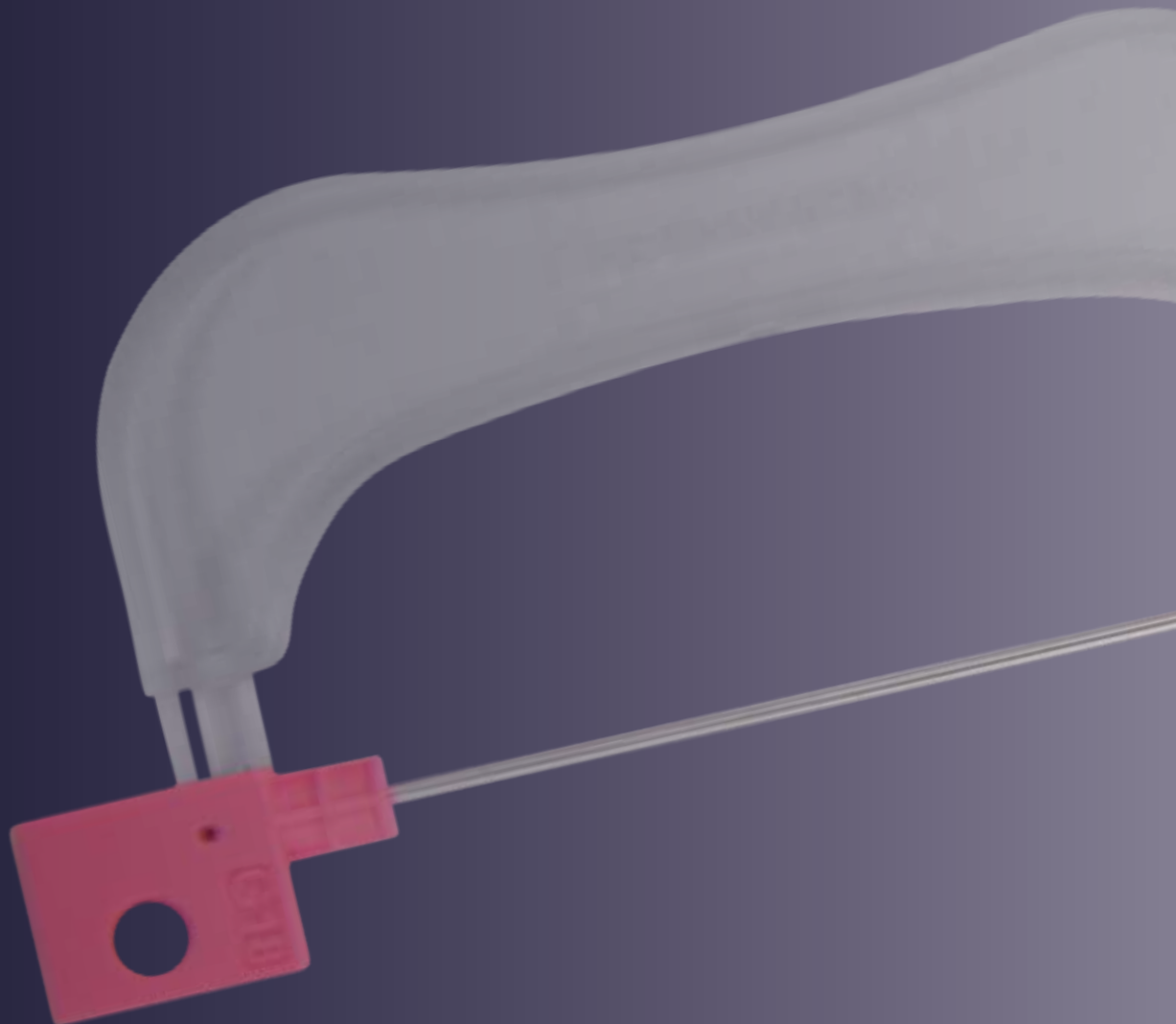
■ Table of contents

Disposable Needles for Biopsy Guns DNG-1010 to DNG-1040 & Coaxial Needles COX-1010 to COX-1040	4-7
Semi-automatic Biopsy Gun SBG-2010 & Coaxial Needles COX-2000	8-9
Automatic Biopsy Gun ABG-2020 & Coaxial Needles COX-2000	10-11
Möller Medical Blue Biopsy Gun RBG-1000	12
Manual Cut Biopsy MBY-1050	13
Fine Needle Biopsy Fine Needle Biopsy Chiba FNB-1001 Fine Needle Biopsy Spinal FNB-1002 Fine Needle Biopsy Franseen FNB-1003 Fine Needle Biopsy Greene Style FNB-1004	14-15
Breast Lesion Markers BLM-1110	16
Breast Lesion Markers BLM-1120 and BLM-1125 Breast Lesion Markers BLM-1130 and BLM-1135	17
Bone Marrow Biopsy System BOW-1060	18
Bone Marrow Aspiration Biopsy BOW-1070	19
Bone Biopsy Needles BOY-1080	20
Quality and readiness for delivery	21



Biopsy needle for obtaining high quality histological samples using a biopsy gun

- Colour coded hubs for immediate identification of the needle size
- Centimetre markings for precise determination of penetration depth
- Echogenic tip for clear visibility using ultrasound
- DNG-1010: compatible, among others, with ProMag™ 2.2 ¹⁾; 17mm side-notch, with Luer hub
- DNG-1020: compatible with Möller Medical Blue und ProMag™ Ultra ²⁾; 19 mm side-notch
- DNG-1030: compatible, among others, with ProMag™ Ultra ST ³⁾; 9 mm side-notch
- DNG-1040: compatible, among others, with Bard® Magnum® ⁴⁾; 19 mm side-notch
- Coaxial needles are to be found in the tables on pages 6/7



¹⁾ ProMag™ 2.2 is a registered trademark of Angiotech

²⁾ ProMag™ Ultra is a registered trademark of Angiotech

³⁾ ProMag™ Ultra ST is a registered trademark of Angiotech

⁴⁾ Bard® Magnum® is a registered trademark of C.R. Bard

Coaxial needle to guide the biopsy needles and to allow multiple sampling with a single puncture

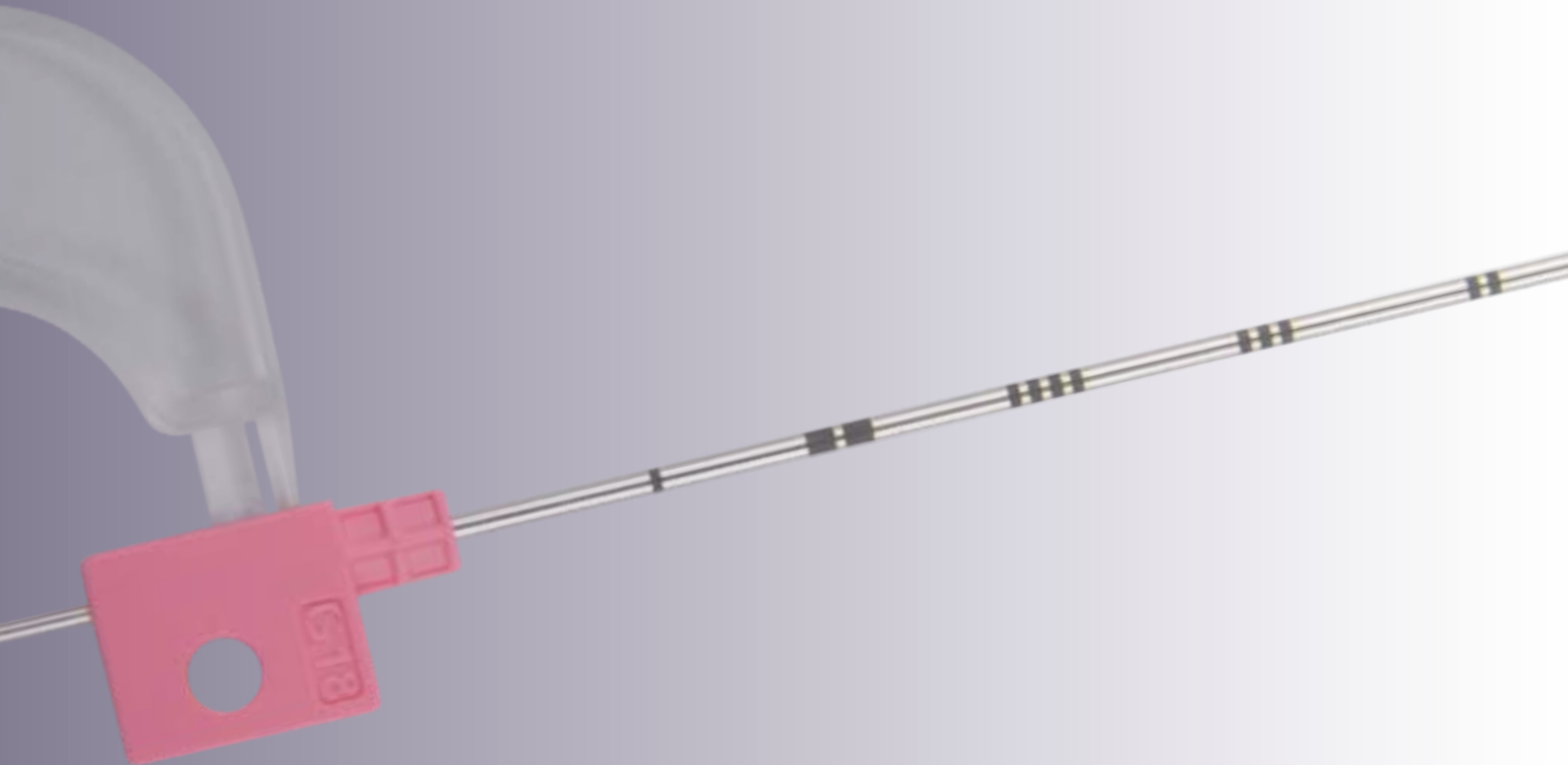
COX-1010 is compatible with Biopsy Needle DNG-1010

COX-1020 is compatible with Biopsy Needle DNG-1020

COX-1030 is compatible with Biopsy Needle DNG-1030

COX-1040 is compatible with Biopsy Needle DNG-1040

- Centimetre markings and infinitely variable spring clips for precise determination of penetration depth
- Echogenic tip for clear visibility using ultrasound
- Hubs colour-coded to match the corresponding DNG disposable biopsy needles



Disposable biopsy needle DNG-1010 compatible, among others, with ProMag™ 2.2 ¹⁾, with Luer hub

17 mm side notch Biopsy needle size	Biopsy needle catalogue ref.	PU	Coaxial needle size	Coaxial needle catalogue ref.	PU
20G x 10 cm	DNG-1010-20-0100	10	19G x 4.9 cm	COX-1010-20-0049	10
20G x 16 cm	DNG-1010-20-0160	10	19G x 10.9 cm	COX-1010-20-0109	10
20G x 20 cm	DNG-1010-20-0200	10			
18G x 10 cm	DNG-1010-18-0100	10	17G x 4.6 cm	COX-1010-18-0046	10
18G x 16 cm	DNG-1010-18-0160	10	17G x 10.6 cm	COX-1010-18-0106	10
18G x 20 cm	DNG-1010-18-0200	10	17G x 14.6 cm	COX-1010-18-0146	10
18G x 25 cm	DNG-1010-18-0250	10			
18G x 30 cm	DNG-1010-18-0300	10			
16G x 10 cm	DNG-1010-16-0100	10	15G x 4.6 cm	COX-1010-16-0046	10
16G x 16 cm	DNG-1010-16-0160	10	15G x 10.6 cm	COX-1010-16-0106	10
16G x 20 cm	DNG-1010-16-0200	10			
16G x 25 cm	DNG-1010-16-0250	10			
14G x 10 cm	DNG-1010-14-0100	10	13G x 4.6 cm	COX-1010-14-0046	10
14G x 12 cm	DNG-1010-14-0120	10			
14G x 16 cm	DNG-1010-14-0160	10	13G x 10.6 cm	COX-1010-14-0106	10
14G x 20 cm	DNG-1010-14-0200	10			



Disposable biopsy needle DNG-1020 compatible with Möller Medical Blue and ProMag™ Ultra ²⁾

19 mm side notch Biopsy needle size	Biopsy needle catalogue ref.	PU	Coaxial needle size	Coaxial needle catalogue ref.	PU
20G x 10 cm	DNG-1020-20-0100	10	19G x 4.9 cm	COX-1020-20-0049	10
20G x 16 cm	DNG-1020-20-0160	10	19G x 10.9 cm	COX-1020-20-0109	10
20G x 20 cm	DNG-1020-20-0200	10			
18G x 10 cm	DNG-1020-18-0100	10	17G x 4.6 cm	COX-1020-18-0046	10
18G x 16 cm	DNG-1020-18-0160	10	17G x 10.6 cm	COX-1020-18-0106	10
18G x 20 cm	DNG-1020-18-0200	10	17G x 14.6 cm	COX-1020-18-0146	10
18G x 25 cm	DNG-1020-18-0250	10			
18G x 30 cm	DNG-1020-18-0300	10			
16G x 10 cm	DNG-1020-16-0100	10	15G x 4.6 cm	COX-1020-16-0046	10
16G x 16 cm	DNG-1020-16-0160	10	15G x 10.6 cm	COX-1020-16-0106	10
16G x 20 cm	DNG-1020-16-0200	10			
16G x 25 cm	DNG-1020-16-0250	10			
14G x 10 cm	DNG-1020-14-0100	10	13G x 4.6 cm	COX-1020-14-0046	10
14G x 12 cm	DNG-1020-14-0120	10			
14G x 16 cm	DNG-1020-14-0160	10	13G x 10.6 cm	COX-1020-14-0106	10
14G x 20 cm	DNG-1020-14-0200	10			



¹⁾ ProMag™ 2.2 is a registered trademark of Angiotech

²⁾ ProMag™ Ultra is a registered trademark of Angiotech

Disposable biopsy needle DNG-1030 compatible, among others, with ProMag™ Ultra ST ³⁾

9 mm side notch Biopsy needle size	Biopsy needle catalogue ref.	PU	Coaxial needle size	Coaxial needle catalogue ref.	PU
20G x 8 cm	DNG-1030-20-0080	10	19G x 3.8 cm	COX-1030-20-0038	10
20G x 12 cm	DNG-1030-20-0120	10	19G x 7.8 cm	COX-1030-20-0078	10
20G x 16 cm	DNG-1030-20-0160	10	19G x 11.8 cm	COX-1030-20-0118	10
18G x 8 cm	DNG-1030-18-0080	10	17G x 3.5 cm	COX-1030-18-0035	10
18G x 12 cm	DNG-1030-18-0120	10	17G x 7.5 cm	COX-1030-18-0075	10
18G x 16 cm	DNG-1030-18-0160	10	17G x 11.5 cm	COX-1030-18-0115	10
16G x 8 cm	DNG-1030-16-0080	10	15G x 3.5 cm	COX-1030-16-0035	10
16G x 12 cm	DNG-1030-16-0120	10	15G x 7.5 cm	COX-1030-16-0075	10
16G x 16 cm	DNG-1030-16-0160	10	15G x 11.5 cm	COX-1030-16-0115	10
14G x 8 cm	DNG-1030-14-0080	10	13G x 3.5 cm	COX-1030-14-0035	10
14G x 12 cm	DNG-1030-14-0120	10	13G x 7.5 cm	COX-1030-14-0075	10
14G x 16 cm	DNG-1030-14-0160	10			


Disposable biopsy needle DNG-1040 compatible, among others, with Bard® Magnum® ⁴⁾

19 mm side notch Biopsy needle size	Biopsy needle catalogue ref.	PU	Coaxial needle size	Coaxial needle catalogue ref.	PU
20G x 10 cm	DNG-1040-20-0100	10	19G x 4.6 cm	COX-1040-20-0046	10
20G x 13 cm	DNG-1040-20-0130	10			
20G x 16 cm	DNG-1040-20-0160	10	19G x 10.6 cm	COX-1040-20-0106	10
20G x 20 cm	DNG-1040-20-0200	10			
18G x 10 cm	DNG-1040-18-0100	10	17G x 4.3 cm	COX-1040-18-0043	10
18G x 13 cm	DNG-1040-18-0130	10			10
18G x 16 cm	DNG-1040-18-0160	10	17G x 10.3 cm	COX-1040-18-0103	10
18G x 20 cm	DNG-1040-18-0200	10	17G x 14.3 cm	COX-1040-18-0143	
18G x 25 cm	DNG-1040-18-0250	10			
18G x 30 cm	DNG-1040-18-0300	10			
16G x 10 cm	DNG-1040-16-0100	10	15G x 4.3 cm	COX-1040-16-0043	10
16G x 13 cm	DNG-1040-16-0130	10			
16G x 16 cm	DNG-1040-16-0160	10	15G x 10.3 cm	COX-1040-16-0103	10
16G x 20 cm	DNG-1040-16-0200	10			
14G x 10 cm	DNG-1040-14-0100	10	13G x 4.3 cm	COX-1040-14-0043	10
14G x 13 cm	DNG-1020-14-0130	10			
14G x 16 cm	DNG-1040-14-0160	10	13G x 10.3 cm	COX-1040-14-0103	10
14G x 20 cm	DNG-1040-14-0200	10			



³⁾ ProMag™ Ultra ST is a registered trademark of Angiotech

⁴⁾ Bard® Magnum® is a registered trademark of C.R. Bard

Semi-automatic disposable biopsy device for obtaining high quality histological samples

- Centimetre markings for precise determination of penetration depth
- Echogenic tip for clear visibility using ultrasound
- Side-notch length choice of 10mm or 20mm
- Clear colour-coding of the gauge sizes
- Corresponding coaxial needles are to be found in the table on page 9



Coaxial needle to guide the biopsy needles and to allow multiple sampling with a single puncture

COX-2000 is compatible with Semi-automatic Biopsy Gun SBG-2010

- Centimetre markings and infinitely variable spring clips for precise determination of penetration depth
- Echogenic tip for clear visibility using ultrasound
- Hubs colour-coded to match the corresponding SBG disposable biopsy guns



Semi-automatic Biopsy Gun SBG-2010

Biopsy needle size	Biopsy needle catalogue ref.	PU	Coaxial needle size	Coaxial needle catalogue ref.	PU
20G x 10 cm	SBG-2010-20-0100	10	19G x 5.1 cm	COX-2000-20-0051	10
20G x 15 cm	SBG-2010-20-0150	10	19G x 10.1 cm	COX-2000-20-0101	10
20G x 20 cm	SBG-2010-20-0200	10	19G x 15.1 cm	COX-2000-20-0151	10
18G x 10 cm	SBG-2010-18-0100	10	17G x 5.1 cm	COX-2000-18-0051	10
18G x 15 cm	SBG-2010-18-0150	10	17G x 10.1 cm	COX-2000-18-0101	10
18G x 20 cm	SBG-2010-18-0200	10	17G x 15.1 cm	COX-2000-18-0151	10
18G x 25 cm	SBG-2010-18-0250	10	17G x 20.1 cm	COX-2000-18-0201	10
16G x 10 cm	SBG-2010-16-0100	10	15G x 5.1 cm	COX-2000-16-0051	10
16G x 15 cm	SBG-2010-16-0150	10	15G x 10.1 cm	COX-2000-16-0101	10
16G x 20 cm	SBG-2010-16-0200	10	15G x 15.1 cm	COX-2000-16-0151	10
14G x 10 cm	SBG-2010-14-0100	10	13G x 5.1 cm	COX-2000-14-0051	10
14G x 15 cm	SBG-2010-14-0150	10	13G x 10.1 cm	COX-2000-14-0101	10
14G x 20 cm	SBG-2010-14-0200	10	13G x 15.1 cm	COX-2000-14-0151	10



Automatic disposable biopsy device for obtaining high quality histological samples

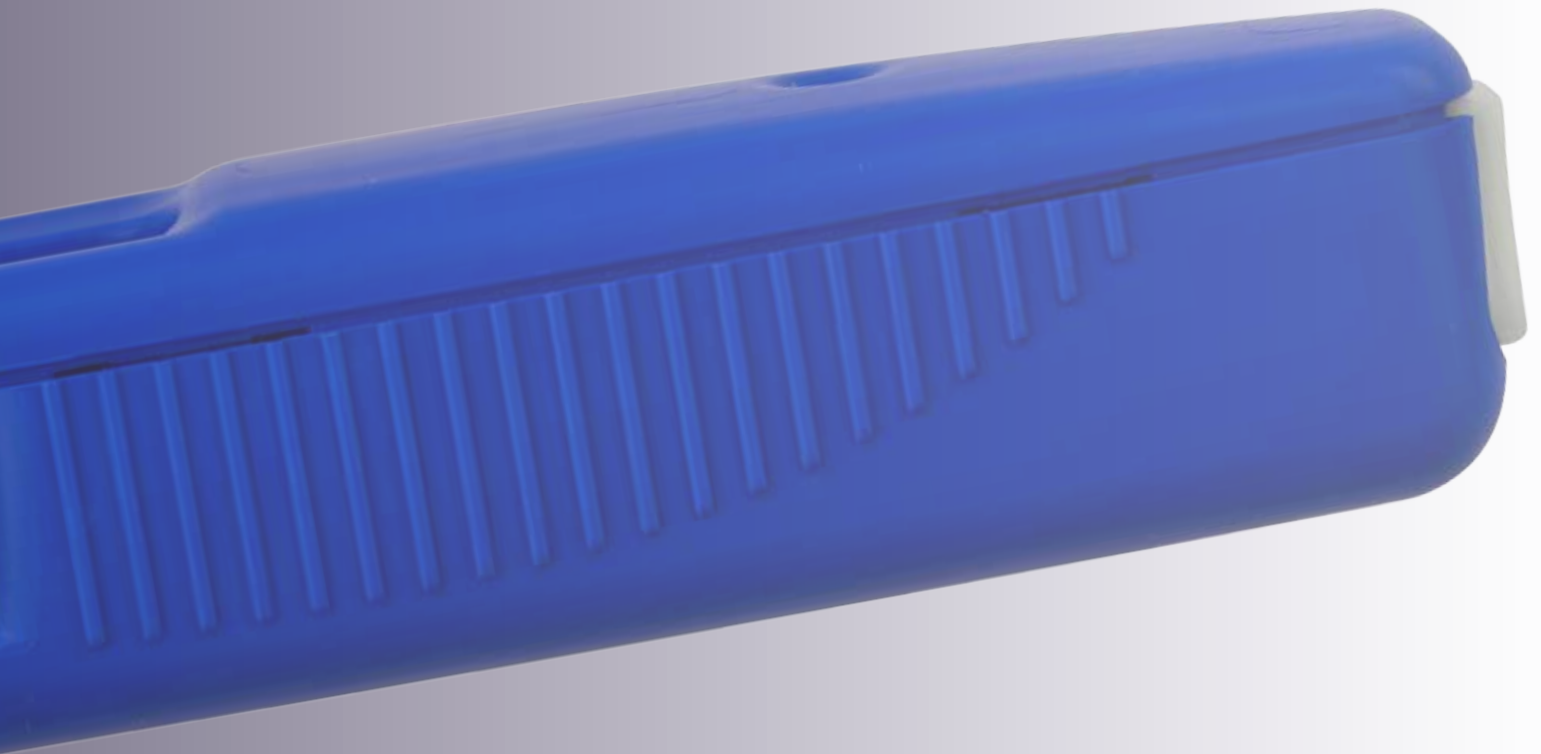
- Centimetre markings for precise determination of penetration depth
- Echogenic tip for clear visibility using ultrasound
- Clear colour-coding of the gauge sizes
- Can be used with one hand (ideal for prostate biopsies)
- 2 triggers (on the side and at the back)
- Choice of semi- or fully-automatic mode
- Strong spring
- Special low-noise damping for improved patient comfort
- Corresponding coaxial needles are to be found in the table on page 11



Coaxial needle to guide the biopsy needles and to allow multiple sampling with a single puncture

COX-2000 is compatible with Automatic Biopsy Gun ABG-2020

- Centimetre markings and infinitely variable spring clips allow precise determination of the penetration depth
- Echogenic tip for clear visibility using ultrasound
- Hubs colour-coded to match the corresponding ABG disposable biopsy guns


Automatic Biopsy Gun ABG-2020

Biopsy needle size	Biopsy needle catalogue ref.	PU	Coaxial needle size	Coaxial needle catalogue ref.	PU
20G x 10 cm	ABG-2020-20-0100	5	19G x 5.1 cm	COX-2000-20-0051	10
20G x 15 cm	ABG-2020-20-0150	5	19G x 10.1 cm	COX-2000-20-0101	10
20G x 20 cm	ABG-2020-20-0200	5	19G x 15.1 cm	COX-2000-20-0151	10
18G x 10 cm	ABG-2020-18-0100	5	17G x 5.1 cm	COX-2000-18-0051	10
18G x 15 cm	ABG-2020-18-0150	5	17G x 10.1 cm	COX-2000-18-0101	10
18G x 20 cm	ABG-2020-18-0200	5	17G x 15.1 cm	COX-2000-18-0151	10
18G x 25 cm	ABG-2020-18-0250	5	17G x 20.1 cm	COX-2000-18-0201	10
16G x 10 cm	ABG-2020-16-0100	5	15G x 5.1 cm	COX-2000-16-0051	10
16G x 15 cm	ABG-2020-16-0150	5	15G x 10.1 cm	COX-2000-16-0101	10
16G x 20 cm	ABG-2020-16-0200	5	15G x 15.1 cm	COX-2000-16-0151	10
14G x 10 cm	ABG-2020-14-0100	5	13G x 5.1 cm	COX-2000-14-0051	10
14G x 15 cm	ABG-2020-14-0150	5	13G x 10.1 cm	COX-2000-14-0101	10
14G x 20 cm	ABG-2020-14-0200	5	13G x 15.1 cm	COX-2000-14-0151	10



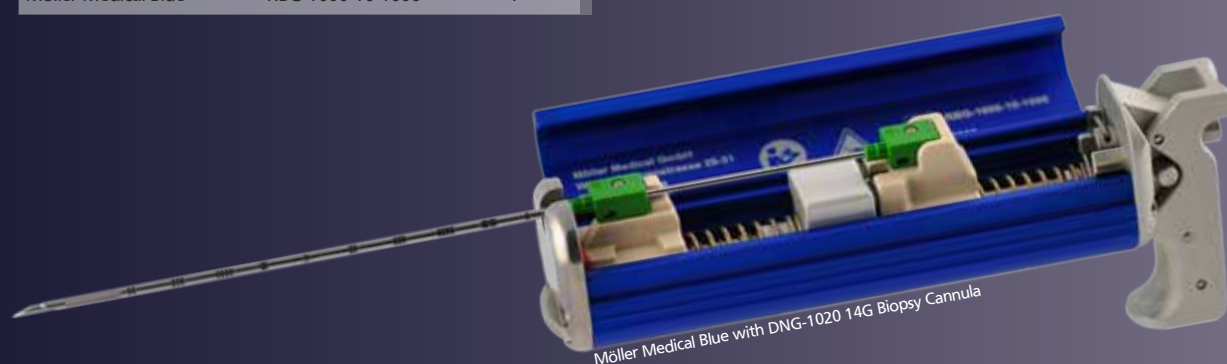
Reusable, automatic biopsy instrument for use with disposable biopsy needles to obtain soft tissue samples

- User friendly, light construction
- 2 triggers (at front and back) for use in various positions
- 25 mm advancement
- automatic safety function to prevent accidental triggering while cocking
- Simple extraction of sample tissue without removing the needle from the biopsy instrument



Biopsy-Gun Möller Medical RBG-1000

Reusable Biopsy instrument	Catalogue ref.	PU
Möller Medical Blue	RBG-1000-10-1000	1



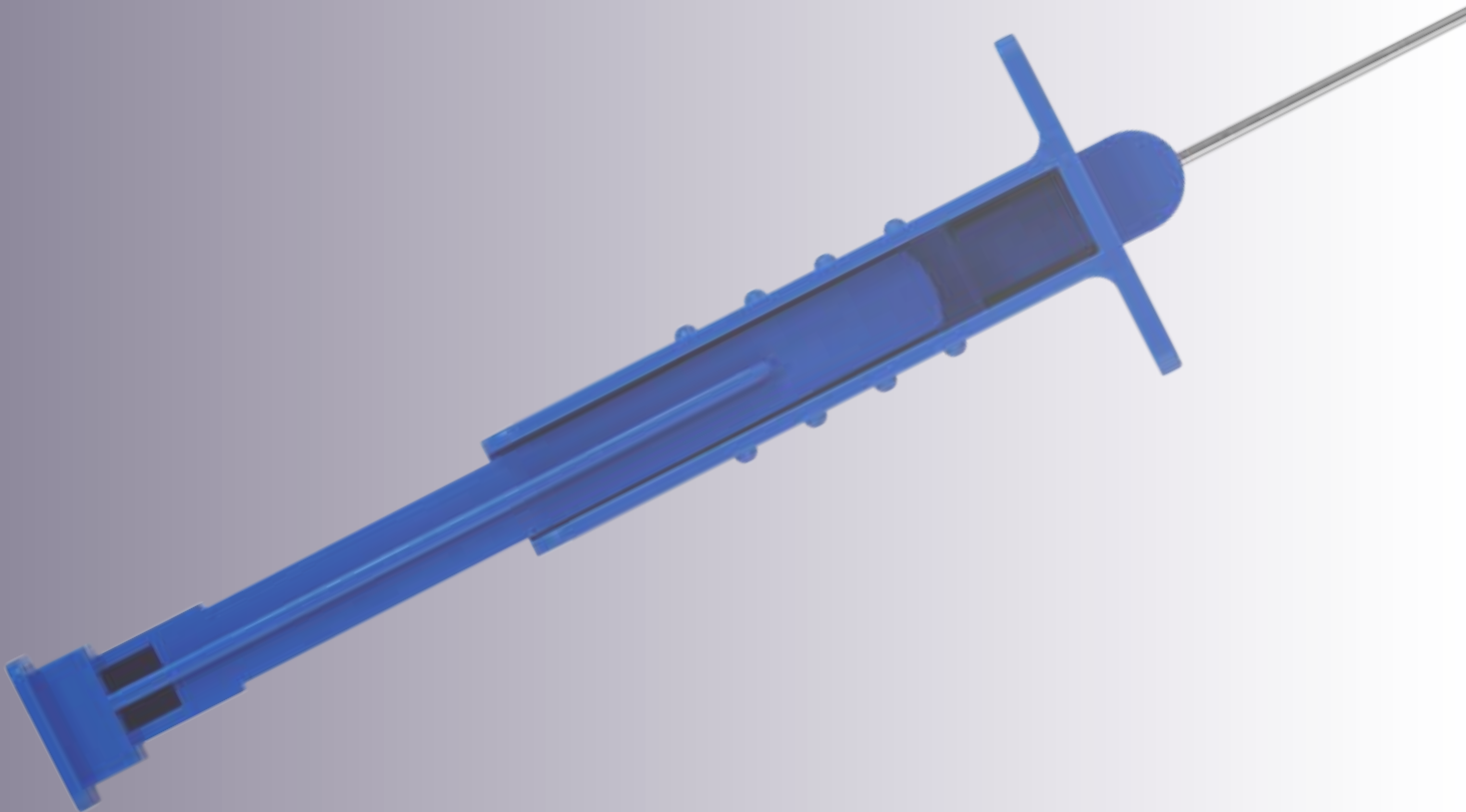
The following biopsy needles are recommended for use with this instrument:

DNG-1020 TruCut-Mechanism

Page 4-6

Manual TruCut biopsy needle for obtaining histological tissue samples

- The TruCut biopsy needle possesses an outstandingly high quality tip
- A broad range of applications and simple usage are hallmarks of the MBY-1050
- Atraumatic puncture and reliable tissue samples are characteristic for this needle type



Manual Cut Biopsy MBY-1050

Biopsy needle size	Biopsy needle catalogue ref.	PU
18G x 7.5 cm	MBY-1050-18-0075	10
18G x 11.4 cm	MBY-1050-18-0114	10
18G x 15.2 cm	MBY-1050-18-0152	10
18G x 20 cm	MBY-1050-18-0200	10
17G x 7.5 cm	MBY-1050-17-0075	10
17G x 11.4 cm	MBY-1050-17-0114	10
17G x 15.2 cm	MBY-1050-17-0152	10
17G x 20 cm	MBY-1050-17-0200	10

Biopsy needle size	Biopsy needle catalogue ref.	PU
16G x 7.5 cm	MBY-1050-16-0075	10
16G x 11.4 cm	MBY-1050-16-0114	10
16G x 15.2 cm	MBY-1050-16-0152	10
16G x 20 cm	MBY-1050-16-0200	10
14G x 7.5 cm	MBY-1050-14-0075	10
14G x 11.4 cm	MBY-1050-14-0114	10
14G x 15.2 cm	MBY-1050-14-0152	10
14G x 20 cm	MBY-1050-14-0200	10


Needles with various tip types for percutaneous application and Fine Needle Biopsy

- For percutaneous extraction of cytological and histological samples
- Centimetre markings and infinitely variable spring clips for precise determination of penetration depth
- Echogenic tip for clear visibility using ultrasound
- All FNB needles are available on request as MR-compatible models
- Simple identification of sizes using colour coded luer lock hubs



Chiba Needles FNB-1001



Biopsy needle size	Biopsy needle catalogue ref.	PU
25G x 9 cm	FNB-1001-25-0090	10
25G x 15 cm	FNB-1001-25-0150	10
23G x 9 cm	FNB-1001-23-0090	10
23G x 15 cm	FNB-1001-23-0150	10
22G x 9 cm	FNB-1001-22-0090	10
22G x 15 cm	FNB-1001-22-0150	10
22G x 20 cm	FNB-1001-22-0200	10
20G x 9 cm	FNB-1001-20-0090	10
20G x 15 cm	FNB-1001-20-0150	10
20G x 20 cm	FNB-1001-20-0200	10
18G x 9 cm	FNB-1001-18-0090	10
18G x 15 cm	FNB-1001-18-0150	10
18G x 20 cm	FNB-1001-18-0200	10

Spinal Needles FNB-1002


Biopsy needle size	Biopsy needle catalogue ref.	PU
25G x 9 cm	FNB-1002-25-0090	10
25G x 15 cm	FNB-1002-25-0150	10
23G x 9 cm	FNB-1002-23-0090	10
23G x 15 cm	FNB-1002-23-0150	10
22G x 9 cm	FNB-1002-22-0090	10
22G x 15 cm	FNB-1002-22-0150	10
22G x 20 cm	FNB-1002-22-0200	10
20G x 9 cm	FNB-1002-20-0090	10
20G x 15 cm	FNB-1002-20-0150	10
18G x 9 cm	FNB-1002-18-0090	10
18G x 15 cm	FNB-1002-18-0150	10

Franseen Needles FNB-1003

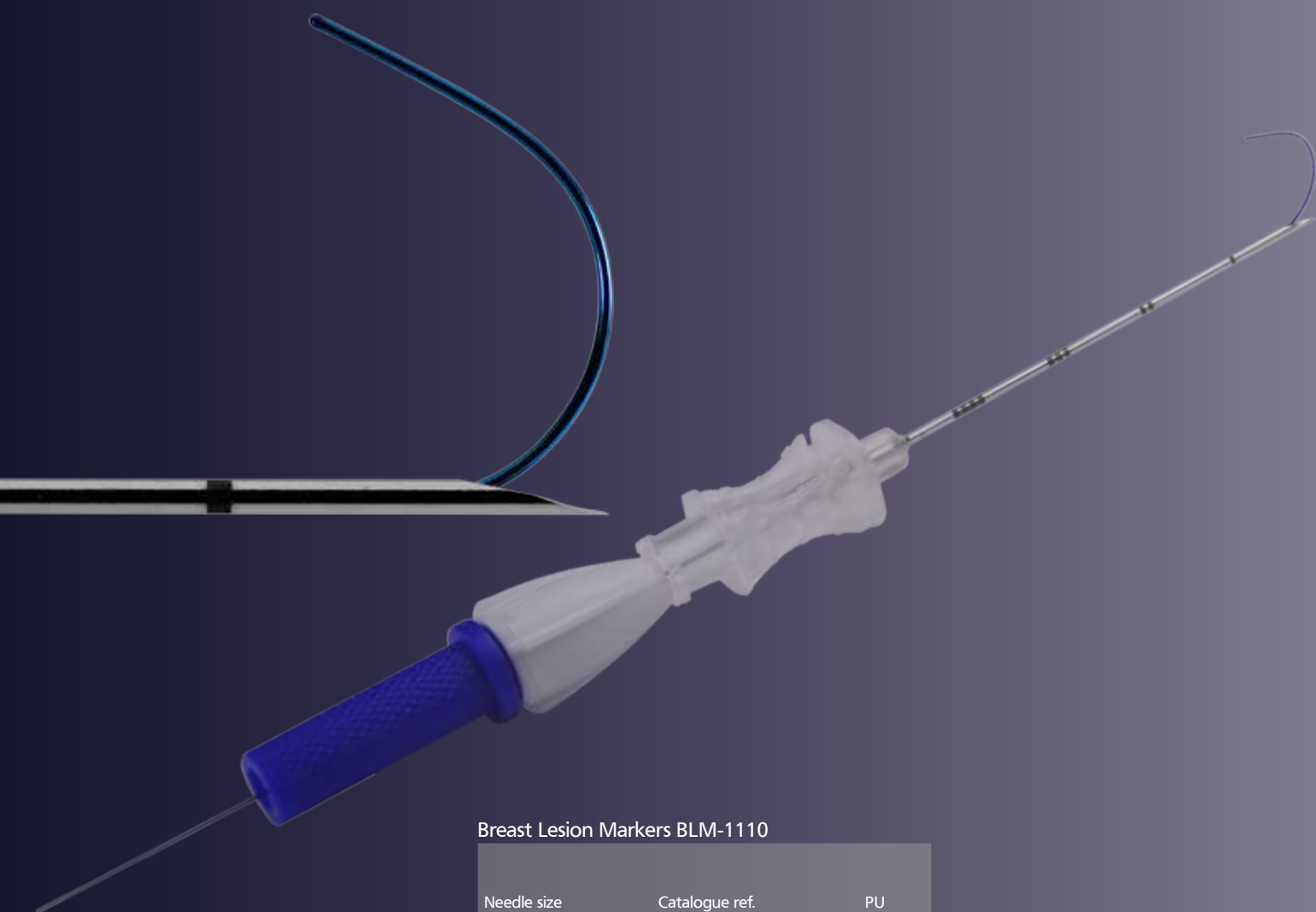

Biopsy needle size	Biopsy needle catalogue ref.	PU
22G x 9 cm	FNB-1003-22-0090	10
22G x 15 cm	FNB-1003-22-0150	10
22G x 20 cm	FNB-1003-22-0200	10
20G x 9 cm	FNB-1003-20-0090	10
20G x 15 cm	FNB-1003-20-0150	10
20G x 20 cm	FNB-1003-20-0200	10
18G x 9 cm	FNB-1003-18-0090	10
18G x 15 cm	FNB-1003-18-0150	10
18G x 20 cm	FNB-1003-18-0200	10

Greene Style Needles FNB-1004


Biopsy needle size	Biopsy needle catalogue ref.	PU
22G x 15 cm	FNB-1004-22-0150	10
20G x 10 cm	FNB-1004-20-0100	10
20G x 15 cm	FNB-1004-20-0150	10
18G x 10 cm	FNB-1004-18-0100	10
18G x 15 cm	FNB-1004-18-0150	10

Repositionable Breast Lesion Marker for tagging and pre-operative localisation

- High stability marker wire ensures secure positioning
- BLM-1110 is supplied with a J-curved NiTiNol wire which is stable but flexible
- Repositioning of the wire is possible with minimal effort
- A special hub system with a screw fitting enables optimal handling when pushing the marker wire into the tissue
- Centimetre markings for precise determination of the penetration depth



Breast Lesion Markers BLM-1110

Needle size	Catalogue ref.	PU
20G x 3 cm	BLM-1110-20-0030	10
20G x 5 cm	BLM-1110-20-0050	10
20G x 7.5 cm	BLM-1110-20-0075	10
20G x 10 cm	BLM-1110-20-0100	10
20G x 12.5 cm	BLM-1110-20-0125	10

BLM-1120, BLM-1125, BLM-1130 and BLM-1135

Breast Lesion Marker for tagging and pre-operative localisation

- BLM-1120 and BLM-1125 are supplied with a smooth, stiff marker wire
- BLM-1130 and BLM-1135 are supplied with a flexible multi-wire marker
- Special marker geometry ensures optimal insertion of the wire into tissue
- Centimetre markings for precise determination of penetration depth
- A fixing clip prevents dislocalisation of the wire
- Needle types BLM-1125 and BLM-1135 have echogenic tips for clear visibility using ultrasound



Breast lesion Markers BLM-1120
-stiff marker-

Needle size	Catalogue ref.	PU
20G x 3 cm	BLM-1120-20-0030	10
20G x 5 cm	BLM-1120-20-0050	10
20G x 7.5 cm	BLM-1120-20-0075	10
20G x 10 cm	BLM-1120-20-0100	10
20G x 12.5 cm	BLM-1120-20-0125	10

Breast lesion Markers BLM-1130
-flexible marker-

Needle size	Catalogue ref.	PU
20G x 3 cm	BLM-1130-20-0030	10
20G x 5 cm	BLM-1130-20-0050	10
20G x 7.5 cm	BLM-1130-20-0075	10
20G x 10 cm	BLM-1130-20-0100	10
20G x 12.5 cm	BLM-1130-20-0125	10



Breast lesion Markers BLM-1125
-stiff marker and echogenic tip-

Needle size	Catalogue ref.	PU
20G x 3 cm	BLM-1125-20-0030	10
20G x 5 cm	BLM-1125-20-0050	10
20G x 7.5 cm	BLM-1125-20-0075	10
20G x 10 cm	BLM-1125-20-0100	10
20G x 12.5 cm	BLM-1125-20-0125	10

Breast lesion Markers BLM-1135
-flexible marker and echogenic tip-

Needle size	Catalogue ref.	PU
20G x 3 cm	BLM-1135-20-0030	10
20G x 5 cm	BLM-1135-20-0050	10
20G x 7.5 cm	BLM-1135-20-0075	10
20G x 10 cm	BLM-1135-20-0100	10
20G x 12.5 cm	BLM-1135-20-0125	10



Needle set for atraumatic bone marrow biopsy

- Stylet with trocar point for uncomplicated insertion
- Optimal tissue retrieval resulting from special needle tip form
- User friendly handling and optimal force transfer due to ergonomically formed handle with special protective cap
- Secure fixing of the tissue sample using a combination of a special extraction needle and the tapered lumen of the biopsy needle
- Marking on the pusher shows whether adequate sample tissue is contained in the needle
- An insertion aid for the pusher is provided for use without the extraction needle
- 1 Luer cap and 2 needle vices are provided in the set

Bone Marrow Biopsy System BOW-1060

Biopsy needle size	Biopsy needle catalogue ref.	PU
8G x 10 cm	BOW-1060-08-0100	10
8G x 15 cm	BOW-1060-08-0150	10
11G x 10 cm	BOW-1060-11-0100	10
11G x 15 cm	BOW-1060-11-0150	10

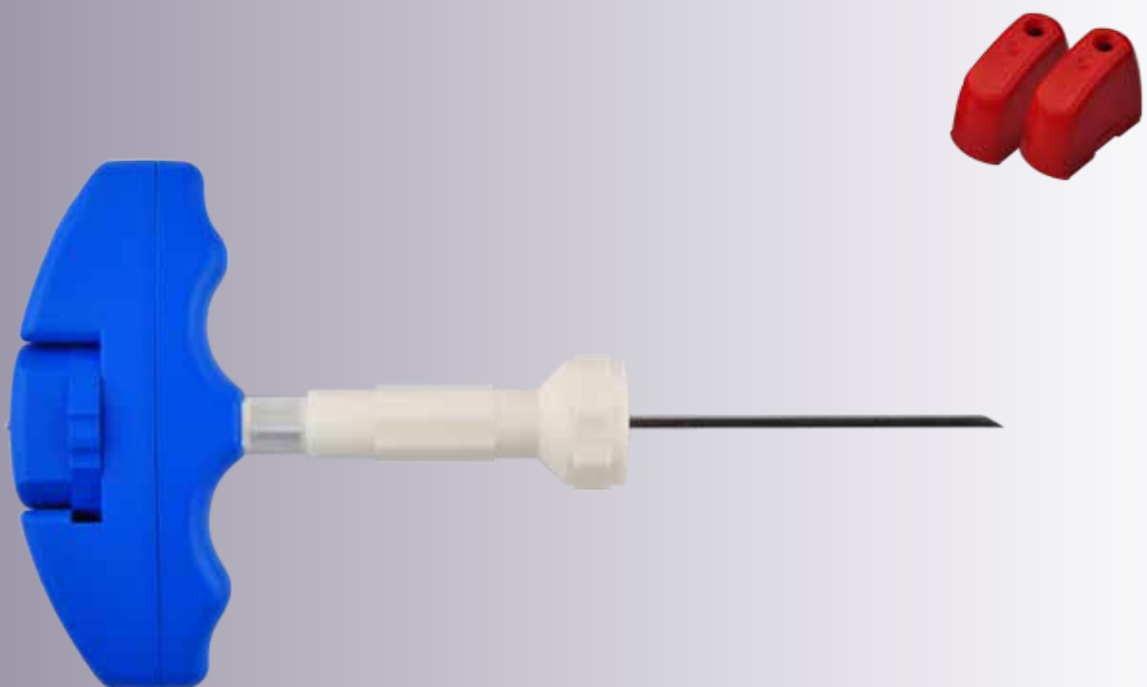


Needle set for atraumatic bone marrow biopsy and aspiration

- Stylet with high quality bevel tip for uncomplicated insertion
- User friendly handling due to ergonomically formed handle
- Luer lock hub for simple and safe attachment of an aspiration syringe
- Infinitely variable distance ring for variable penetration depth (see table „range of lengths“), for instance when performing sternum biopsy
- Distance ring can be removed completely (see table „maximum length“)
- 2 needle vices are provided in the set

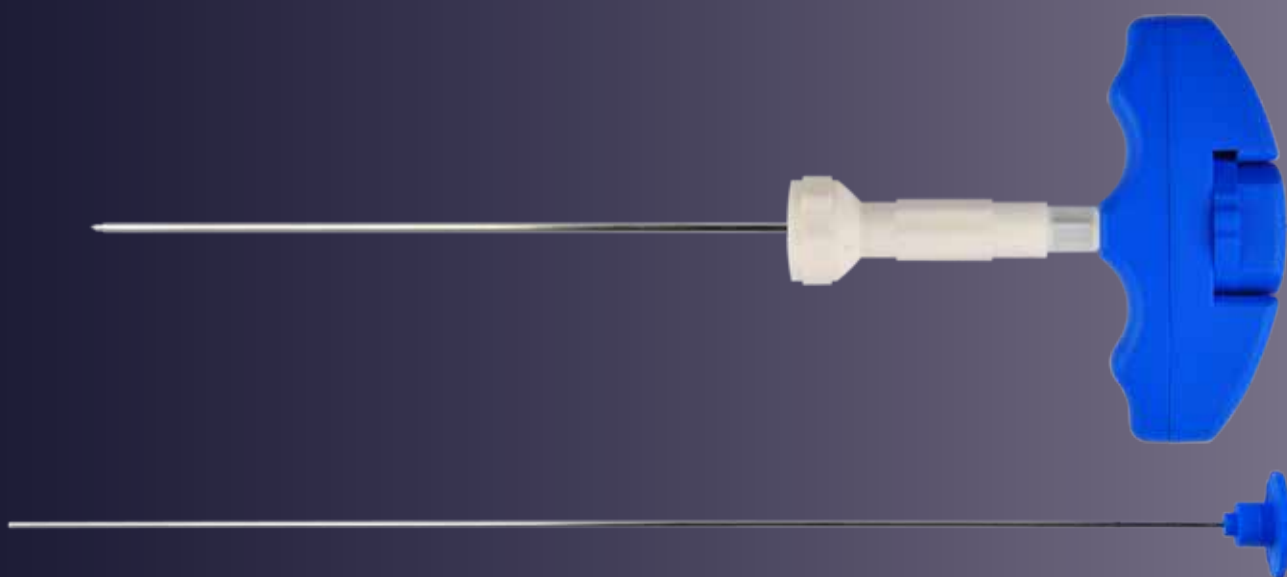
Bone Marrow Aspiration Biopsy BOW-1070

Biopsy needle gauge	Max. length	Range of lengths	Biopsy needle catalogue ref.	PU
15G	4.1 cm	0.3- 1.7 cm	BOW-1070-15-0041	10
15G	6.8 cm	4.5- 3.1 cm	BOW-1070-15-0068	10
15G	10.0 cm	7.7- 6.3 cm	BOW-1070-15-0100	10
16G	6.8 cm	4.5- 3.1 cm	BOW-1070-16-0068	10



Needle set for atraumatic bone biopsy

- Stylet with high quality trocar point for uncomplicated insertion
- User friendly handling due to ergonomically formed handle
- Luer lock hub for simple and safe attachment of an aspiration syringe
- Infinitely variable distance ring for variable penetration depth (see table „range of lengths“), for instance when performing sternum biopsy
- Distance ring can be removed completely (see table „maximum length“)
- Marking on the pusher shows whether adequate sample tissue is contained in the needle
- 2 needle vices are provided in the set



Bone Biopsy Needles BOY-1080

Biopsy needle size	Max. length	Range of lengths	Biopsy needle catalogue ref.	PU
16G	7.5 cm	5.2- 3.8 cm	BOY-1080-16-0075	10
16G	12.5 cm	10.2- 8.8 cm	BOY-1080-16-0125	10
16G	16.5 cm	14.2- 12.8 cm	BOY-1080-16-0165	10



■ Quality and readiness for delivery

We at Möller Medical take quality and availability of products seriously – and that's not just an empty promise. Immediate readiness for delivery and top quality of all Möller Medical products and components are essential parts of our service to the customer. It is, therefore, our philosophy to deliver all key products of the BiopC® range directly from stock. We are expanding this policy step by step to cover the complete range of BiopC® products. This puts us in the position to have nearly every product we offer our customers ready to ship on demand!

Möller Medical is certified according to EN ISO 13485 and EN ISO 9001, entitled to CE-labeling according to EU-directive 93/42/EEC and 98/79/EEC and is registered with the FDA.



fully automated storage system „Kardex“



Möller Medical's specialised cleaning facility

A large, empty, light gray rectangular area intended for taking notes, occupying most of the page below the header and above the footer.



MöllerMedical

Möller Medical GmbH

Wasserkuppenstrasse 29-31

D-36043 Fulda, Germany

Fon +49 661 9 41 95 - 0

Fax +49 661 9 41 95 - 850

info@moeller-medical.com

www.moeller-medical.com

